

Fig. 4.  $P, T$  diagram for crystallization of andesite + 10% by weight of water

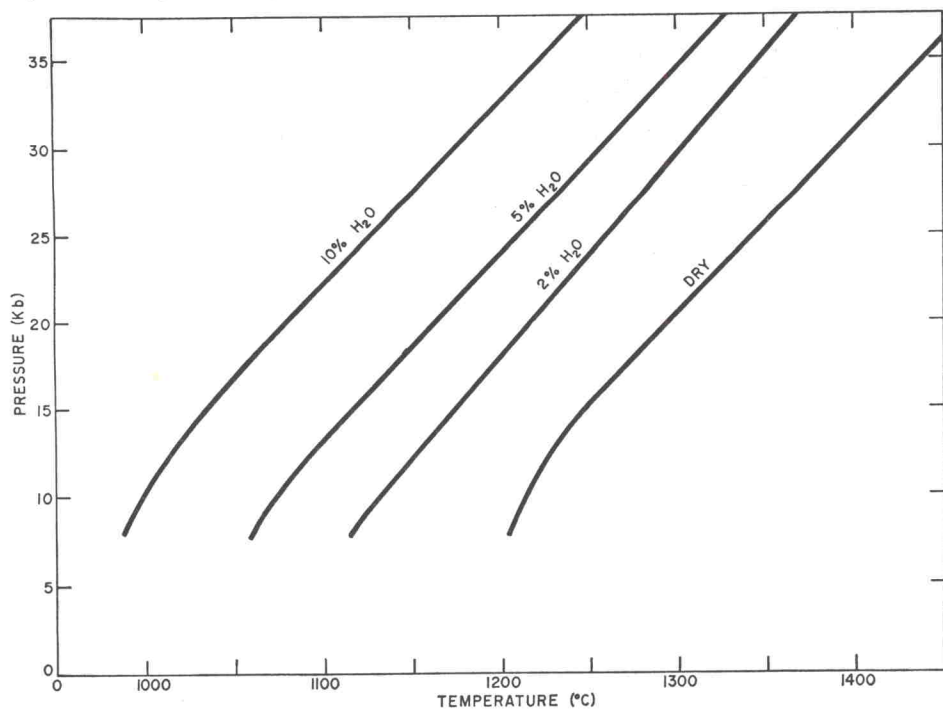


Fig. 5.  $P, T$  plot showing effect of addition of water on lowering the andesite liquidus

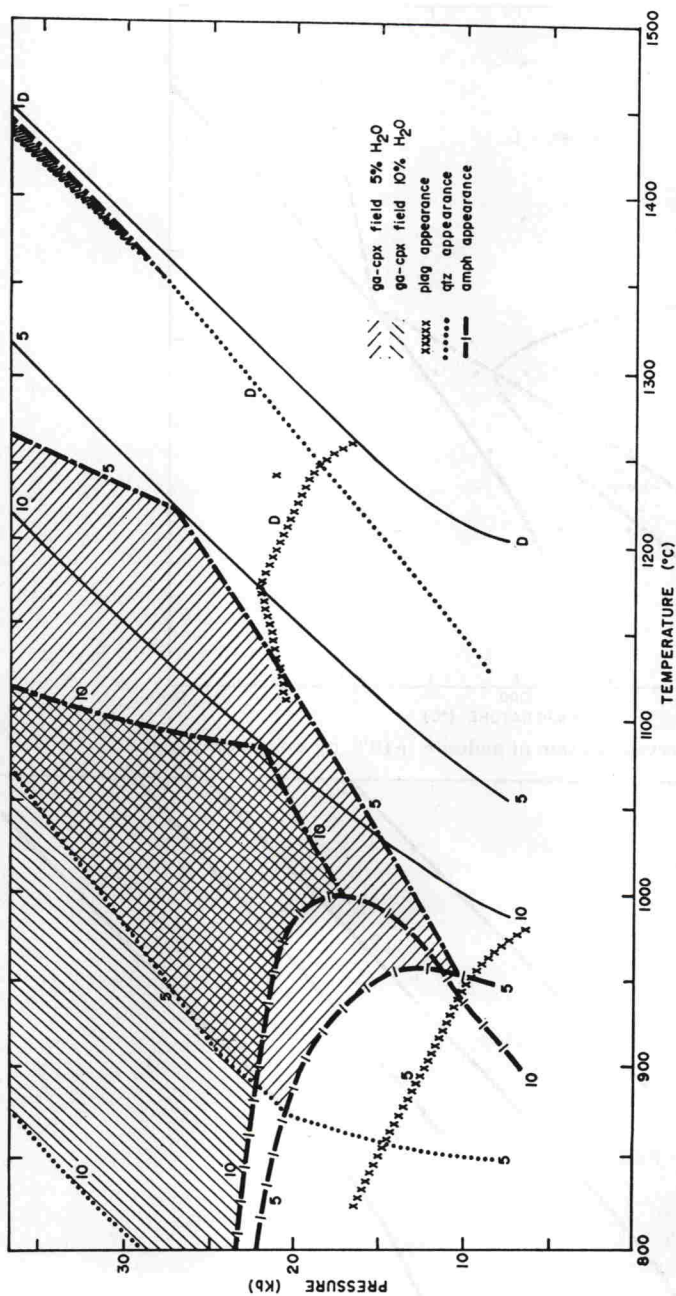


Fig. 6. Combined  $P, T$  plot for the anhydrous and hydrous runs showing effect of water on (a) enlargement of garnet-clinopyroxene crystallization field; (b) suppression of quartz, plagioclase appearance; (c) stability of amphibole. Note: numbers beside curves refer to water content applying to that particular stability curve

4. The depression of the appearance of quartz results in a significantly enlarged field of crystallization of garnet-clinopyroxene with increasing water content at pressures greater than 25 kb. This is clearly illustrated in Fig. 6.